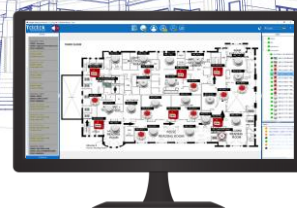


# OBSERVER

- Faster response to fire and intruder related incidents
- Efficiencies in maintenance operations
- Simplification of system control



## DESCRIPTION:

Observer Software is designed to local monitoring of Teletek Electronics addressable Fire Alarm Systems – Iris 4/8, Iris, Iris Pro and Simpo. The software also allowing remote access, administration and video verification of the connected systems.

## FUNCTIONAL FEATURES

- Improved data management and audit trail
- Direct ProsTE software files import (Device name, zone name, panel name and panel IP address)
- Control and monitoring of single or networked panels
- All events records can be monitored, filtered, printed, backed-up
- Multi zones monitoring
- Fast video verification in case of alarm
- Restrict user access to view only, technicians and administrators
- Determined areas can be monitored and it provides to exchange between maps in case of fire and fault events
- Monitors the condition and state of the panels and detectors – Normal, Fire, Fault, Trouble
- Shows full information about the detector in alarm state – zone, name, etc.
- Monitors faults in the panel – Low Battery, AC Loss, etc.
- Allows control over the fire panel – silence buzzer, silence sounders, evacuation, reset
- Possibility to disable or enable devices / zones
- Allows import of architectural plans and pictures (JPG, BMP, PNG, TIF, GIF)
- Signals visually and audibly in case of alarm or fault

## TECHNICAL FEATURES

- Supports up to 32 Intruder and Fire control panels
- Video verification integration with 3-th party camera through Real Time Streaming Protocol (RTSP)
- Printable event log
- Event audio signalization
- Graphic interface view
- Email notification
- Protection by means of password and USB key (Dongle)
- ModBus protocol included
- Multi language support

## PC INSTALLATION REQUIREMENTS

- Processor > 2,0 GHz
- RAM – 4 GB
- Disc space – 1 GB
- Minimum Windows 10 OS version, x64
- .NET Framework version 4.6

larger amounts of monitored equipment require larger amount of RAM memory

## COMPATIBLE PRODUCT RANGE

- Addressable Fire Alarm Systems – Iris, Iris Pro, Simpo

Last update: January 2024