

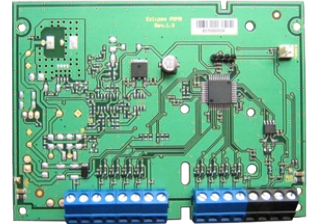
Eclipse PGM 8

PGM expander

● Description

Eclipse PGM 8 is a module for expanding the ECLIPSE 32 system configuration with 8 additional programmable outputs. The added outputs are fully programmable from the control panel. The power supply is from the panel.

The expander module can be mounted in the control panel box (under the main PCB) or can be installed in a universal small plastic box.



● Technical Specifications

Power Supply from the control panel . . . 9-18VDC
 Consumption Max. 100mA@12VDC
 PGM Outputs, OC type 7 (100mA) + 1 (1A)
 Indication type LED
 Operation temperature -20 ÷ +50°C

● Functional Specifications

- Connection directly to the system bus;
- 8 additional programmable outputs with freely programmable parameters, 100mA, OC type (open collector)

● Packing Information

- **Master box** - 45 units PGM 8, dimensions 496 x 305 x 206 mm

● Compatible Product Range

- **Eclipse 32** - Alarm Control Panel

● Contact Information